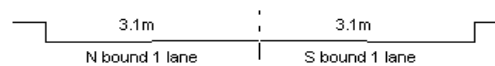


YEAR

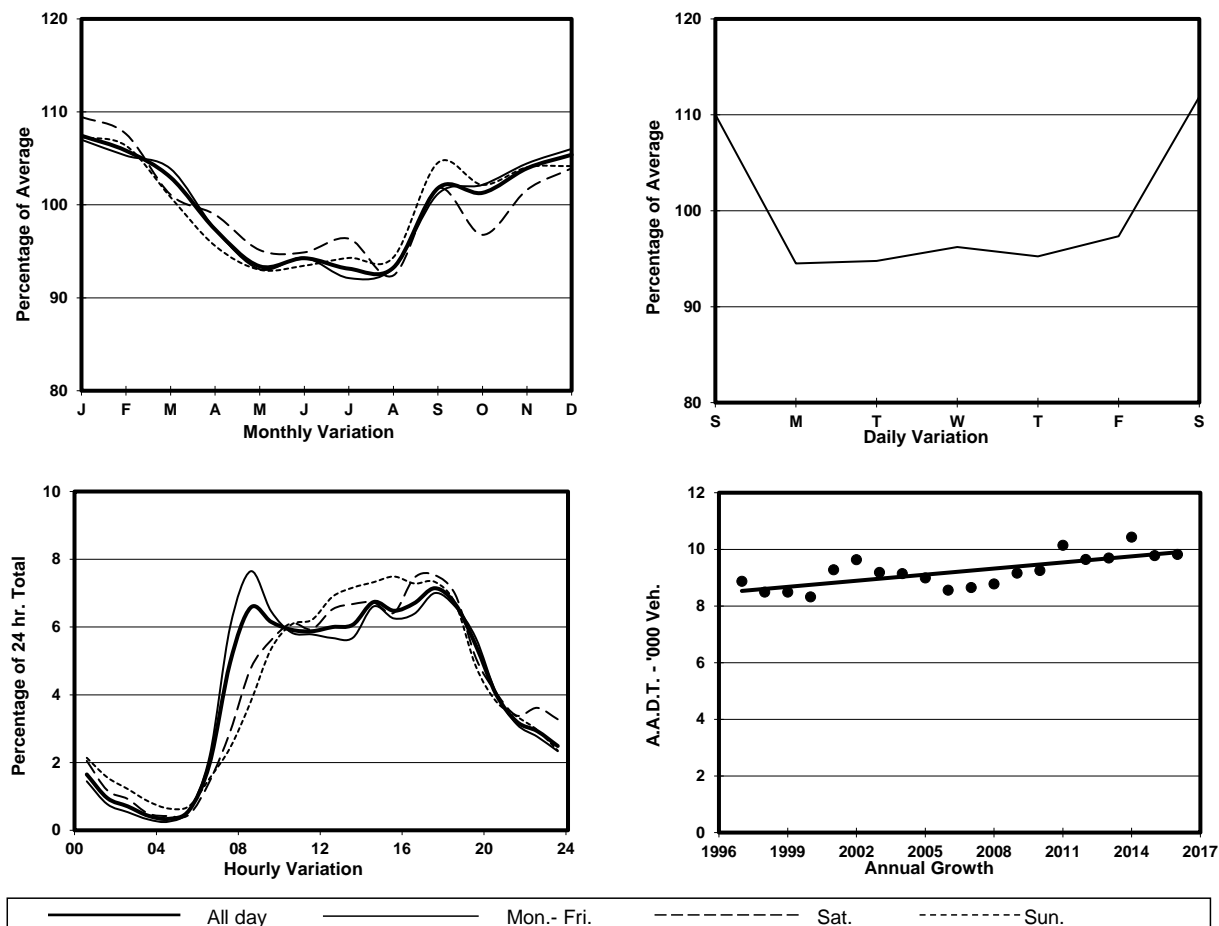
2016

LINK

TAI TAM RD (from CHAI WAN RD to SHEK O RD)

CORE STATION  
ROAD NETWORK  
ROAD TYPE1021  
MAJOR  
PRIMARY DISTRIBUTOR

## 1. TRAFFIC FLOW VARIATION AND GROWTH



## 2. TRAFFIC CHARACTERISTICS (BY DIRECTION)

| Parameter                            | All - Day | Mon. - Fri. | Sat.      | Sun.      |
|--------------------------------------|-----------|-------------|-----------|-----------|
| <b>SOUTH BOUND</b>                   |           |             |           |           |
| A.A.D.T.                             | 4220      | 4020        | 4680      | 4540      |
| R 12 / 24 - %                        | 73.6      | 72.8        | 74        | 76.3      |
| R 16 / 24 - %                        | 90.9      | 91.2        | 90.3      | 89.9      |
| AM Peak Hour                         | 0900-1000 | 0900-1000   | 0900-1000 | 0900-1000 |
| One-way flow at AM peak hour         | 280       | 270         | 280       | 280       |
| T - % (AM)                           | -         | 5.4         | -         | -         |
| PM Peak Hour                         | 1600-1700 | 1800-1900   | 1600-1700 | 1600-1700 |
| One-way flow at PM peak hour         | 270       | 260         | 350       | 320       |
| T - % (PM)                           | -         | 4.2         | -         | -         |
| Prop.of commercial vehicles - 16 hr. | -         | 6.5         | -         | -         |
| <b>NORTH BOUND</b>                   |           |             |           |           |
| A.A.D.T.                             | 5600      | 5310        | 6280      | 6230      |
| R 12 / 24 - %                        | 76.6      | 78.3        | 73.3      | 72.4      |
| R 16 / 24 - %                        | 90.9      | 91.8        | 89.4      | 88.4      |
| AM Peak Hour                         | 0800-0900 | 0800-0900   | 0900-1000 | 0900-1000 |
| One-way flow at AM peak hour         | 410       | 470         | 340       | 290       |
| T - % (AM)                           | -         | 8.6         | -         | -         |
| PM Peak Hour                         | 1700-1800 | 1700-1800   | 1800-1900 | 1700-1800 |
| One-way flow at PM peak hour         | 450       | 430         | 500       | 530       |
| T - % (PM)                           | -         | 10.2        | -         | -         |
| Prop.of commercial vehicles - 16 hr. | -         | 6.9         | -         | -         |

## 3. OTHER INFORMATION AND COMMENT

**4. Vehicle classification and occupancy - Monday to Friday**

| Time      |     | Class of vehicle |         |      |         |      |            |       |         |         |      |
|-----------|-----|------------------|---------|------|---------|------|------------|-------|---------|---------|------|
|           |     | Motor            | Private | Taxi | Private | PLB  | Goods veh. |       | Non     | Fr. Bus |      |
|           |     | Cycle            | Car     |      | LB      |      | Light      | M & H | Fr. Bus | SD      | DD   |
| 0700-0800 | Pro | 5.1              | 52.3    | 15.9 | 2.3     | 2.8  | 10.8       | 1.7   | 6.8     | 0.0     | 2.3  |
|           | Ocp | 1.1              | 1.5     | 2.1  | 12.0    | 15.0 | 1.6        | 1.7   | 24.4    | 0.0     | 39.7 |
| 0800-0900 | Pro | 6.6              | 65.8    | 6.1  | 0.0     | 2.6  | 10.7       | 2.0   | 4.1     | 0.0     | 2.0  |
|           | Ocp | 1.1              | 1.5     | 2.0  | 0.0     | 12.6 | 2.2        | 1.0   | 10.6    | 0.0     | 42.6 |
| 0900-1000 | Pro | 1.1              | 65.2    | 9.6  | 1.1     | 4.3  | 12.8       | 2.7   | 1.6     | 0.0     | 1.7  |
|           | Ocp | 1.0              | 1.4     | 1.9  | 1.0     | 9.9  | 1.8        | 1.6   | 8.0     | 0.0     | 34.9 |
| 1000-1100 | Pro | 3.8              | 57.5    | 12.1 | 1.5     | 3.0  | 15.9       | 1.5   | 2.3     | 0.0     | 2.5  |
|           | Ocp | 1.0              | 1.7     | 2.2  | 1.0     | 9.8  | 1.4        | 1.0   | 2.3     | 0.0     | 25.7 |
| 1100-1200 | Pro | 2.9              | 49.6    | 13.7 | 4.3     | 2.2  | 21.6       | 1.4   | 2.2     | 0.0     | 2.2  |
|           | Ocp | 1.3              | 1.6     | 2.1  | 2.8     | 10.0 | 1.8        | 1.0   | 6.7     | 0.0     | 25.2 |
| 1200-1300 | Pro | 3.4              | 58.5    | 11.0 | 2.1     | 3.4  | 17.2       | 0.7   | 1.4     | 0.0     | 2.2  |
|           | Ocp | 1.0              | 1.6     | 2.1  | 2.3     | 13.4 | 1.4        | 1.0   | 11.0    | 0.0     | 27.3 |
| 1300-1400 | Pro | 7.8              | 33.8    | 13.0 | 0.0     | 3.5  | 33.0       | 2.6   | 3.5     | 0.0     | 2.8  |
|           | Ocp | 1.1              | 1.5     | 1.8  | 0.0     | 12.8 | 1.7        | 1.0   | 9.0     | 0.0     | 26.0 |
| 1400-1500 | Pro | 6.2              | 50.6    | 18.5 | 1.4     | 4.1  | 12.3       | 2.7   | 2.1     | 0.0     | 2.2  |
|           | Ocp | 1.2              | 1.7     | 2.1  | 2.5     | 14.2 | 1.6        | 1.5   | 7.7     | 0.0     | 23.5 |
| 1500-1600 | Pro | 3.5              | 61.9    | 9.8  | 1.7     | 2.3  | 14.5       | 4.0   | 0.6     | 0.0     | 1.7  |
|           | Ocp | 1.0              | 1.7     | 2.1  | 4.0     | 11.5 | 1.7        | 1.3   | 2.0     | 0.0     | 30.9 |
| 1600-1700 | Pro | 3.5              | 49.7    | 13.4 | 1.5     | 3.5  | 18.9       | 0.5   | 7.5     | 0.0     | 1.6  |
|           | Ocp | 1.0              | 1.6     | 2.1  | 1.7     | 14.6 | 1.8        | 1.0   | 13.3    | 0.0     | 35.7 |
| 1700-1800 | Pro | 9.0              | 52.0    | 15.0 | 0.5     | 4.5  | 11.0       | 3.0   | 3.5     | 0.0     | 1.5  |
|           | Ocp | 1.2              | 1.7     | 2.5  | 1.0     | 13.4 | 2.5        | 1.0   | 22.7    | 0.0     | 43.0 |
| 1800-1900 | Pro | 6.4              | 64.0    | 12.3 | 1.0     | 4.4  | 6.4        | 0.0   | 3.9     | 0.0     | 1.6  |
|           | Ocp | 1.2              | 1.7     | 2.2  | 6.5     | 16.0 | 1.5        | 0.0   | 20.4    | 0.0     | 34.8 |
| 1900-2000 | Pro | 5.2              | 67.0    | 20.0 | 0.0     | 1.9  | 1.9        | 0.0   | 1.9     | 0.0     | 2.1  |
|           | Ocp | 1.0              | 1.5     | 1.8  | 0.0     | 17.0 | 1.0        | 0.0   | 16.0    | 0.0     | 23.1 |
| 2000-2100 | Pro | 8.8              | 55.7    | 23.5 | 0.0     | 3.9  | 4.9        | 0.0   | 0.0     | 0.0     | 3.2  |
|           | Ocp | 1.1              | 1.3     | 1.8  | 0.0     | 11.0 | 1.8        | 0.0   | 0.0     | 0.0     | 13.9 |
| 2100-2200 | Pro | 6.8              | 56.8    | 25.7 | 0.0     | 5.4  | 1.4        | 0.0   | 0.0     | 0.0     | 4.1  |
|           | Ocp | 1.0              | 1.4     | 1.7  | 0.0     | 7.5  | 1.0        | 0.0   | 0.0     | 0.0     | 12.8 |
| 2200-2300 | Pro | 8.3              | 58.3    | 20.8 | 0.0     | 2.8  | 5.6        | 0.0   | 0.0     | 0.0     | 4.2  |
|           | Ocp | 1.0              | 1.4     | 1.5  | 0.0     | 16.5 | 1.0        | 0.0   | 0.0     | 0.0     | 11.0 |
| 16 hours  | Pro | 5.3              | 56.7    | 14.0 | 1.2     | 3.4  | 12.7       | 1.6   | 3.0     | 0.0     | 2.2  |
|           | Ocp | 1.1              | 1.6     | 2.0  | 4.0     | 12.9 | 1.7        | 1.2   | 15.0    | 0.0     | 28.6 |

**Legend**

**Pro.** Proportion of vehicles in % (Sum may not add up to 100% due to figure rounding)\*

**Ocp.** Average occupancy of vehicles including both driver and passengers\*

**M&H** Medium and Heavy

\* All traffic data are collected from combined bounds except for one way traffic